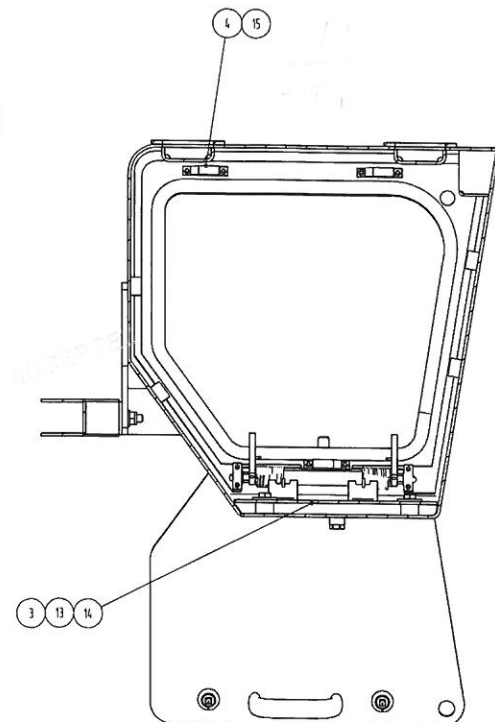
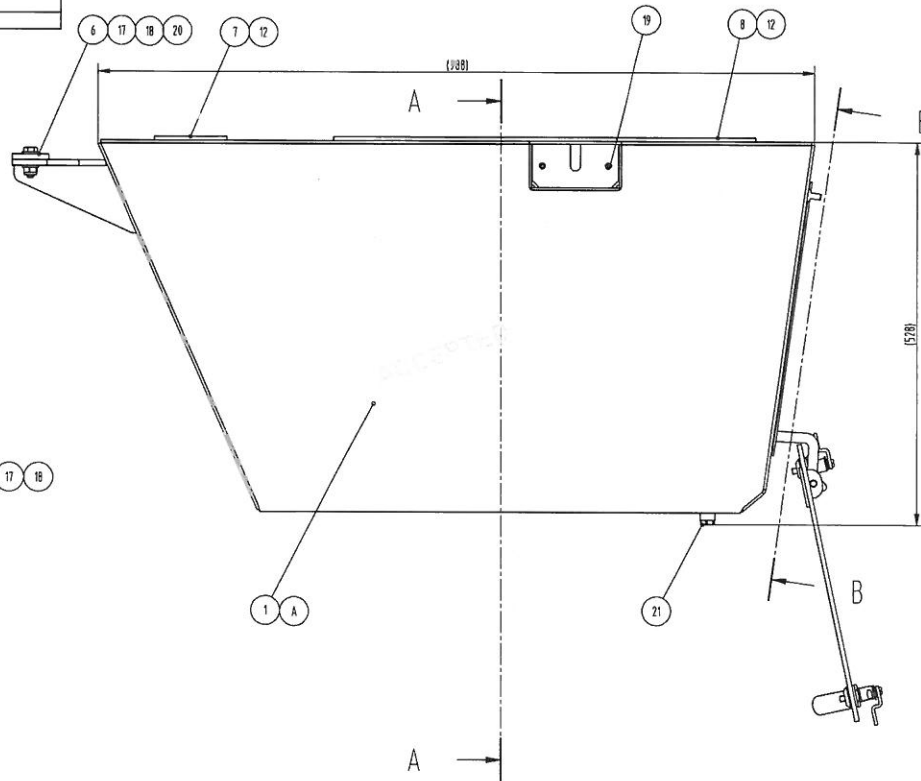
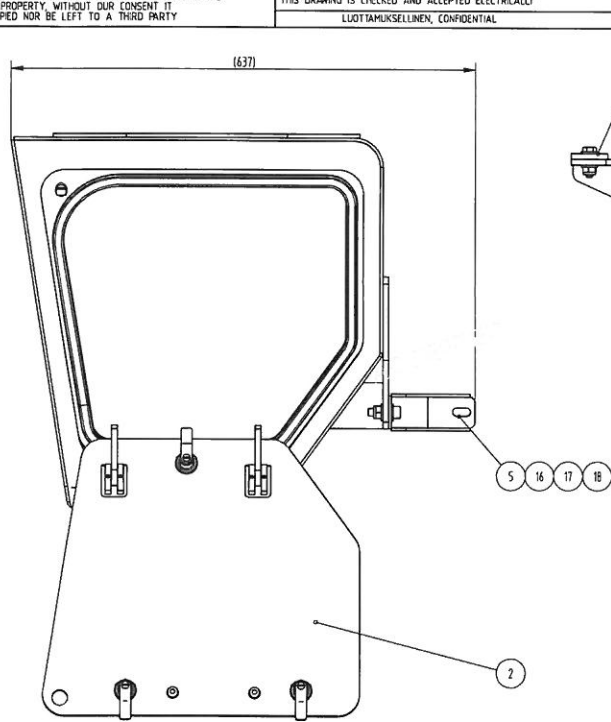


27	692882-00340	SOLUKUMINAUHA / CELLULAR RUBBER STRIP	Ø12 EPDM	0.05
25	90783-0530RS	ALUSLATA / WASHER	Ø5.315 A DIN 9021 A2	4
24	98506-0508RS	MUTTERI / NUT	M5 DIN 985 A2	2
23	90303-0516RS	RUUVI / SCREW	M5X16 DIN EN 24017 A2	2
22	667-321-0000	AMINRENGAS / KEY RING	Ø20	2
21	90640-45403	RENGASSOKKA / RING CUTTER	Ø4.5	2
20	003719	TIVISTEMASSA / JOINT PASTE	SUPPER RTV	1
19	005993	RAJOTIN / LUMTER	L=50	2
18	90313-05080RS	RUUVI / SCREW	M5X8 DIN EN ISO 4762 A2	6
16	91904-20012	TULPPA / PLUG	RAUFOSS 1605	1
15	90785-08C20RS	ALUSLATA / WASHER	Ø8.476 DIN 125 A2	1
14	98506-08130RS	MUTTERI / NUT	M8 DIN 985 A2	2
11	692882-00260	TIVISTENAUHA / SEALING STRIP	EPDM	17
9	90313-08160RS	RUUVI / SCREW	M8X16 DIN EN ISO 4762 A2	6
8	90313-06250RS	RUUVI / SCREW	M6X25 DIN EN ISO 4762 A2	4
6	702436	VASTIN / DOLY		3
4	728723	KINNITTIN / FASTENER		1
3	624873	HUOLTOLUKKU / SERVICE HATCH		1
2	624813	TYÖKALULAATIKKO / TOOLBOX		1
1	624863	KOTELO / ENCLOSURE		1

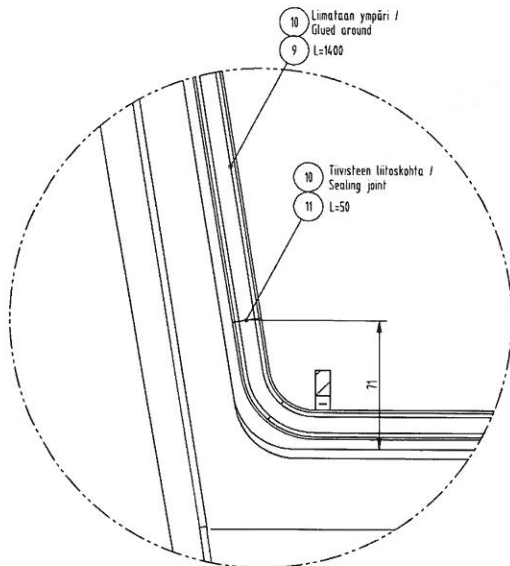
[illegible]

TÄMÄ PIIRUSTUS ON OMAISUUTAMME EIKÄ SITÄ SAA HYÖDYNTÄÄ
EIKÄ LUOVUTAA KOLMANNELLE OSAPUOLELLE ILMAN SUOSTUMUSTAMME
THIS DRAWING IS OUR PROPERTY, WITHOUT OUR CONSENT IT
MAY NOT BE USED, COPIED NOR BE LEFT TO A THIRD PARTY

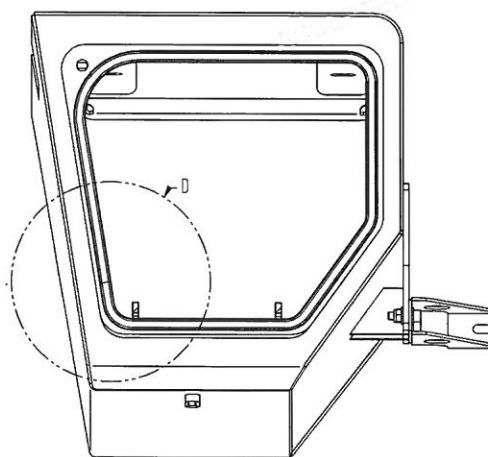
TÄMÄ PIIRUSTUS ON SÄHKÖISESTI TARKASTETTU JA HYVÄKSYTTY
THIS DRAWING IS CHECKED AND ACCEPTED ELECTRICALLY
LUOTTAMUKSELLINEN, CONFIDENTIAL



SECTION A-A



DETAIL D
1:2



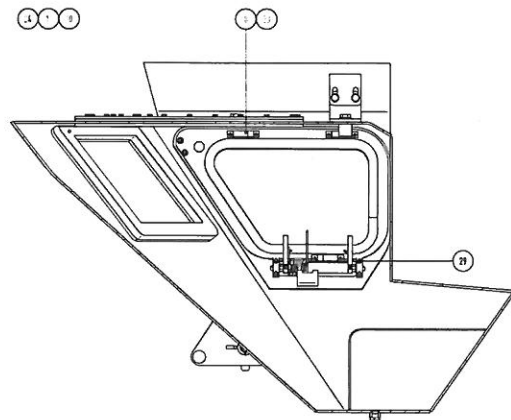
SECTION B-B

Luukun on oltava vesitiivis /
Hatch must be watertight

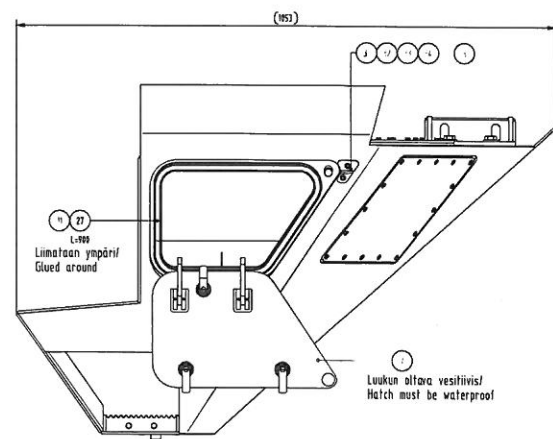
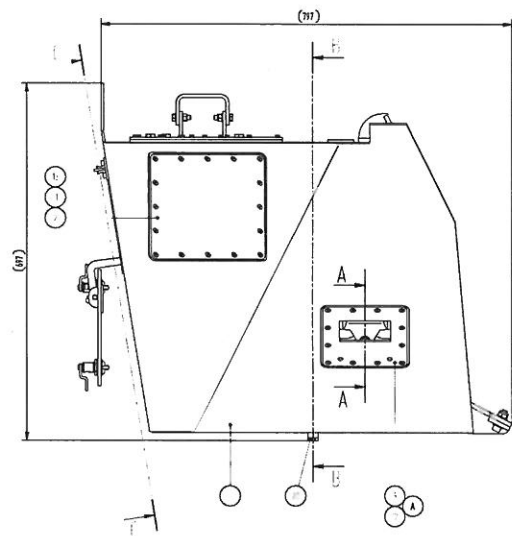
Osan nimi	Osaston nimi	Nimi / Description	Rakenteen nimi	Materiaali / Material	Määrä / Qty
21	91904-20012	TULPPA / PLUG	RAUHOSS 7605		1
20	90303-023500M	RUIVI / SCREW	M10X35 DIN EN 24017 8.8 A2-70		4
19	90593-04115	KIERRENIITI / THREAD RIVET NUT	M10X2		2
18	90720-102500M	ALUSLAATA / WASHER	M10X2 DIN 6796 A2-70		12
17	90506-101700M	RUUVI / NUT	M10 DIN 985 8 A2-70		6
16	90311-103500M	RUIVI / SCREW	M10X35 DIN EN ISO 4762 8.8 A2-70		2
15	90313-050800S	RUIVI / SCREW	M5X8 DIN EN ISO 4762 A2		6
14	90703-110300M	ALUSLAATA / WASHER	M10X4 A DIN 440 A2-70		4
13	90303-022000M	RUIVI / SCREW	M10X20 DIN EN 24017 8.8 A2-70		4
12	95750-10040	LIIMA / GLUE	3M		1
11	692082-00340	SOLUKUMINAUHA / CELLULAR RUBBER STRIP	EPDM		0.05
10	003719	TIVISTEMASSA / JOINT PASTE			1
9	692082-00240	TIVISTENAUHA / SEALING STRIP	EPDM		14
8	713409	SOLUKUMITIVISTE / CELLULAR RUBBER SEAL			2
7	624982	SOLUKUMITIVISTE / CELLULAR RUBBER SEAL			1
6	625242	LEVY / PLATE			1
5	713642	KINNITIN / FASTENER			1
4	702438	MASTIN / DOLLY			3
3	623361	VÄLIPOHJA / INTERMEDIATE FLOOR			1
2	624899	HUOLILUUKKU / SERVICE HATCH			1
1	713338	KOTELO / ENCLOSURE			1
Osan nimi	Osaston nimi	Nimi / Description	Rakenteen nimi	Materiaali / Material	Määrä / Qty
Teräsvälit Sharp edges rounded	Muutos/Modifikaatio MOD6936		Teräsvälit Sharp edges rounded	Materiaali / Material	Määrä / Qty
Paino Weight	32 kg	Nimi/Description VARUSTELAATIKKO / EQUIPMENT BOX	Skala/Scale 1:5	Suunn./Designer LUUKKIPER 30.11.2007	Nimike/Item number 713337
ISO 9001 2008		TAKA, VASEN / REAR, LEFT	Tark./Check A2	MATYTO 04.12.2007	Piir./Drawing nr P713337-1
Patria Vehicles Oy					

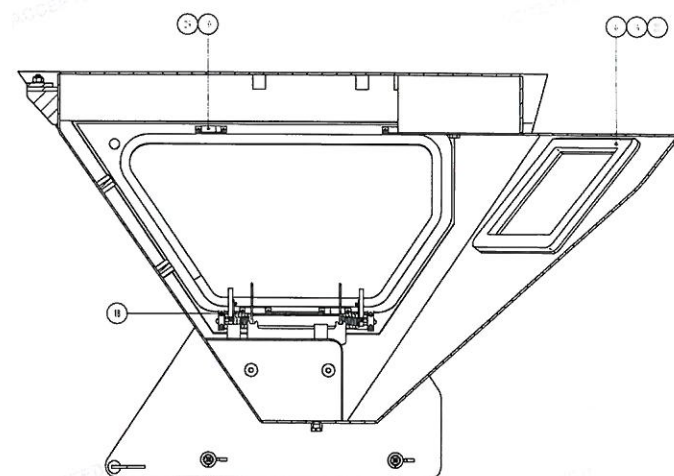
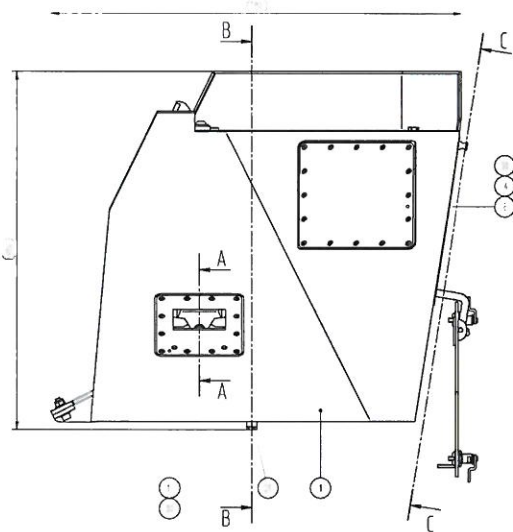
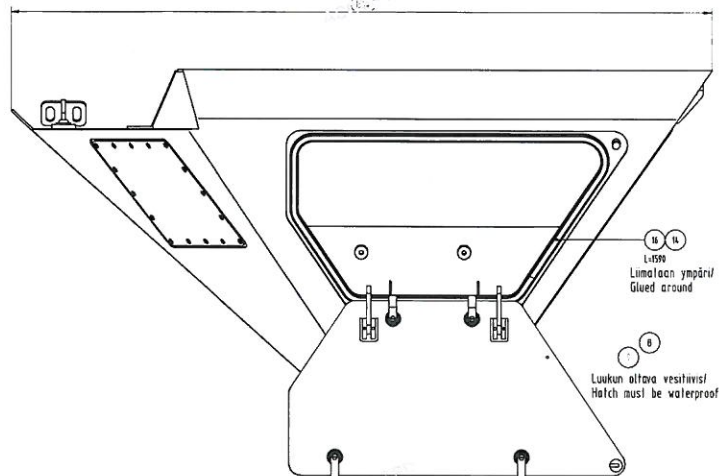
KAHJON KÄYTTÖOHJE ON OSA KÄYTTÖOHJEIDEN
KÄYTTÖOHJEIDEN OSAKKEIDEN OSAKKEIDEN OSAKKEIDEN
THIS DRAWING IS OUR PROPERTY. WHOMSOEVER IT
MAY NOT BE USED, COPIED NOR BE LEFT TO A THIRD PARTY

KAHJON KÄYTTÖOHJE ON OSA KÄYTTÖOHJEIDEN
KÄYTTÖOHJEIDEN OSAKKEIDEN OSAKKEIDEN OSAKKEIDEN
THIS DRAWING IS OUR PROPERTY. WHOMSOEVER IT
MAY NOT BE USED, COPIED NOR BE LEFT TO A THIRD PARTY

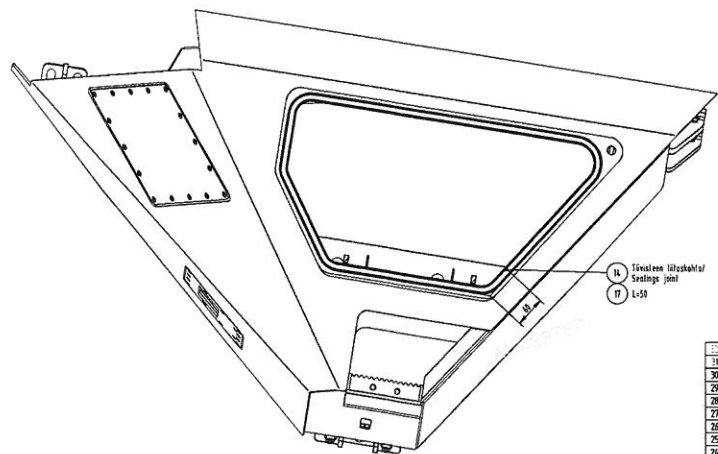
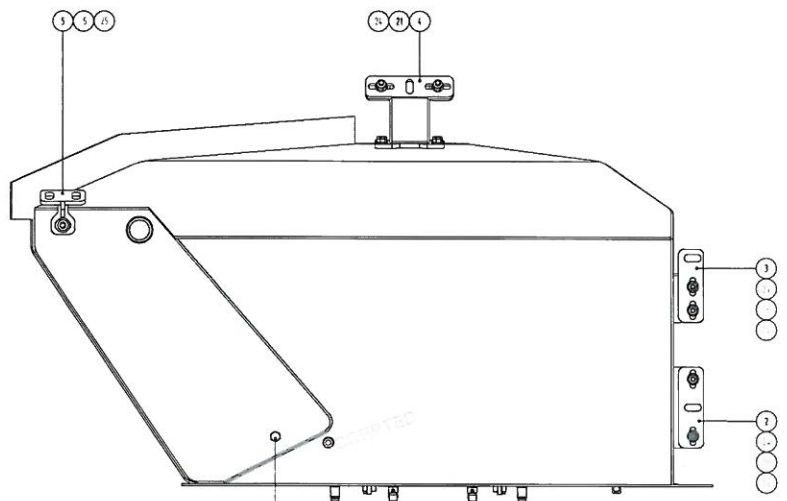


SI 1000 000

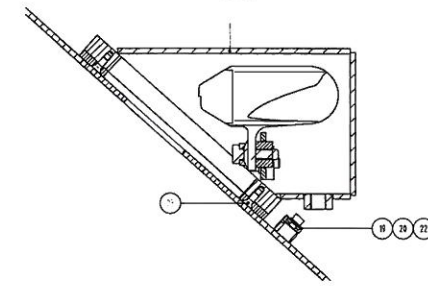




SECTION B-B



SECTION C-C



SECTION A-A
12

Osittainen osa Part name	Kuvaus / Description	Osittainen osa Part name	Kuvaus / Description
1	KOTILO / ENCLOSURE	1	KOTILO / ENCLOSURE
2	SÄÄTÖLEVY / SHIM	2	SÄÄTÖLEVY / SHIM
3	SÄÄTÖLEVY / SHIM	3	SÄÄTÖLEVY / SHIM
4	KINNITIN / BASTION	4	KINNITIN / BASTION
5	KINNITIN / BASTION	5	KINNITIN / BASTION
6	KINNITYSKYIKS / BASTION FRAME	6	KINNITYSKYIKS / BASTION FRAME
7	KANSI / COVER	7	KANSI / COVER
8	KANSI / COVER	8	KANSI / COVER
9	LUUKKU / HATCH	9	LUUKKU / HATCH
10	KANSI / COVER	10	KANSI / COVER
11	KANSI / COVER	11	KANSI / COVER
12	KANSI / COVER	12	KANSI / COVER
13	KANSI / COVER	13	KANSI / COVER
14	KANSI / COVER	14	KANSI / COVER
15	KANSI / COVER	15	KANSI / COVER
16	KANSI / COVER	16	KANSI / COVER
17	KANSI / COVER	17	KANSI / COVER
18	KANSI / COVER	18	KANSI / COVER
19	KANSI / COVER	19	KANSI / COVER
20	KANSI / COVER	20	KANSI / COVER
21	KANSI / COVER	21	KANSI / COVER
22	KANSI / COVER	22	KANSI / COVER
23	KANSI / COVER	23	KANSI / COVER
24	KANSI / COVER	24	KANSI / COVER
25	KANSI / COVER	25	KANSI / COVER
26	KANSI / COVER	26	KANSI / COVER
27	KANSI / COVER	27	KANSI / COVER
28	KANSI / COVER	28	KANSI / COVER
29	KANSI / COVER	29	KANSI / COVER
30	KANSI / COVER	30	KANSI / COVER
31	KANSI / COVER	31	KANSI / COVER
32	KANSI / COVER	32	KANSI / COVER
33	KANSI / COVER	33	KANSI / COVER
34	KANSI / COVER	34	KANSI / COVER
35	KANSI / COVER	35	KANSI / COVER
36	KANSI / COVER	36	KANSI / COVER
37	KANSI / COVER	37	KANSI / COVER
38	KANSI / COVER	38	KANSI / COVER
39	KANSI / COVER	39	KANSI / COVER
40	KANSI / COVER	40	KANSI / COVER
41	KANSI / COVER	41	KANSI / COVER
42	KANSI / COVER	42	KANSI / COVER
43	KANSI / COVER	43	KANSI / COVER
44	KANSI / COVER	44	KANSI / COVER
45	KANSI / COVER	45	KANSI / COVER
46	KANSI / COVER	46	KANSI / COVER
47	KANSI / COVER	47	KANSI / COVER
48	KANSI / COVER	48	KANSI / COVER
49	KANSI / COVER	49	KANSI / COVER
50	KANSI / COVER	50	KANSI / COVER
51	KANSI / COVER	51	KANSI / COVER
52	KANSI / COVER	52	KANSI / COVER
53	KANSI / COVER	53	KANSI / COVER
54	KANSI / COVER	54	KANSI / COVER
55	KANSI / COVER	55	KANSI / COVER
56	KANSI / COVER	56	KANSI / COVER
57	KANSI / COVER	57	KANSI / COVER
58	KANSI / COVER	58	KANSI / COVER
59	KANSI / COVER	59	KANSI / COVER
60	KANSI / COVER	60	KANSI / COVER
61	KANSI / COVER	61	KANSI / COVER
62	KANSI / COVER	62	KANSI / COVER
63	KANSI / COVER	63	KANSI / COVER
64	KANSI / COVER	64	KANSI / COVER
65	KANSI / COVER	65	KANSI / COVER
66	KANSI / COVER	66	KANSI / COVER
67	KANSI / COVER	67	KANSI / COVER
68	KANSI / COVER	68	KANSI / COVER
69	KANSI / COVER	69	KANSI / COVER
70	KANSI / COVER	70	KANSI / COVER
71	KANSI / COVER	71	KANSI / COVER
72	KANSI / COVER	72	KANSI / COVER
73	KANSI / COVER	73	KANSI / COVER
74	KANSI / COVER	74	KANSI / COVER
75	KANSI / COVER	75	KANSI / COVER
76	KANSI / COVER	76	KANSI / COVER
77	KANSI / COVER	77	KANSI / COVER
78	KANSI / COVER	78	KANSI / COVER
79	KANSI / COVER	79	KANSI / COVER
80	KANSI / COVER	80	KANSI / COVER
81	KANSI / COVER	81	KANSI / COVER
82	KANSI / COVER	82	KANSI / COVER
83	KANSI / COVER	83	KANSI / COVER
84	KANSI / COVER	84	KANSI / COVER
85	KANSI / COVER	85	KANSI / COVER
86	KANSI / COVER	86	KANSI / COVER
87	KANSI / COVER	87	KANSI / COVER
88	KANSI / COVER	88	KANSI / COVER
89	KANSI / COVER	89	KANSI / COVER
90	KANSI / COVER	90	KANSI / COVER
91	KANSI / COVER	91	KANSI / COVER
92	KANSI / COVER	92	KANSI / COVER
93	KANSI / COVER	93	KANSI / COVER
94	KANSI / COVER	94	KANSI / COVER
95	KANSI / COVER	95	KANSI / COVER
96	KANSI / COVER	96	KANSI / COVER
97	KANSI / COVER	97	KANSI / COVER
98	KANSI / COVER	98	KANSI / COVER
99	KANSI / COVER	99	KANSI / COVER
100	KANSI / COVER	100	KANSI / COVER

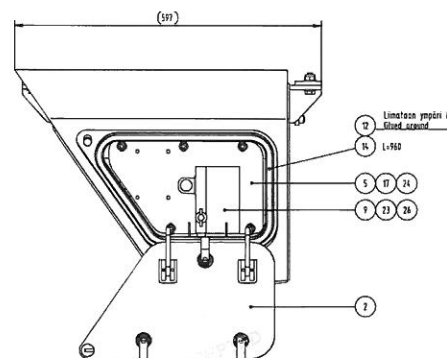
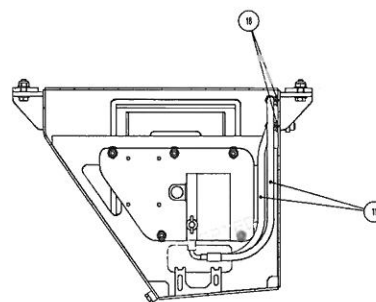


Figure 1 consists of two schematic diagrams of the proposed system. Diagram (a) is a side view showing the main body, handle, and mounting bracket. It includes dimensions A and B. Diagram (b) is a front view showing the internal mechanism and components labeled 1 through 11.



Technical drawing of a cable bend. The drawing shows a cable with a diameter of $\varnothing 11 \pm 0.05$ (labeled I) being bent around a 90-degree angle. The bend radius is labeled R. The distance from the center of the bend to the start of the straight section is labeled B. The drawing also shows a cross-section of the cable with a central core and outer insulation. A label II points to the 'Trossen flossende Seilzug' (cable sheath).

[illegible]